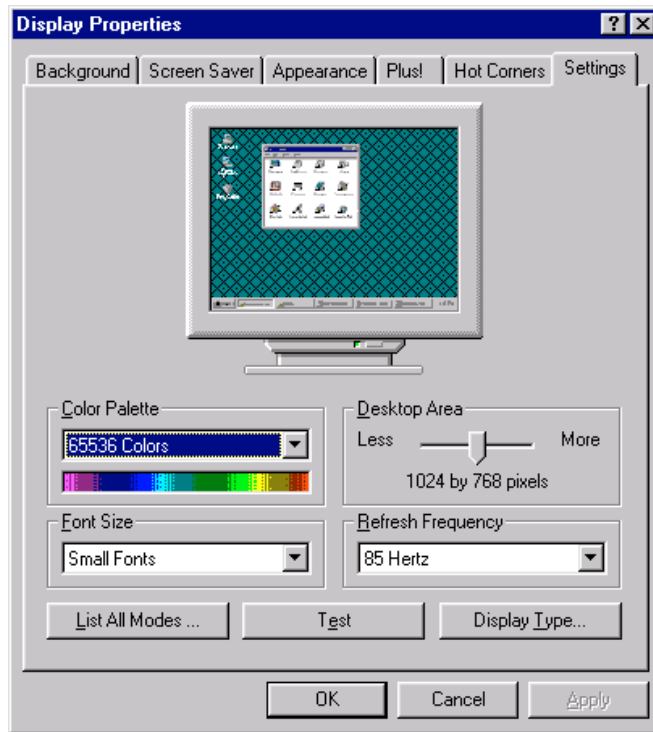


Display Settings



If you are having problems printing labels and other reports, or your settings are running off the screen certain settings on the computer must be set properly. Make sure your screen size, fonts, and resolution are correct.

With all programs closed on your desktop right click in the blank (screen) area and then click on **Properties**.

Under the **Settings** tab where it says *Screen size or Desktop Area* make sure it is 800 x 600 pixels or higher.

Then in the Fonts size make sure it is **Small** fonts (*not Large fonts*). If you do not see Fonts on your screen some computers have an **Advanced** button, click on that, and change fonts to *Small fonts*.

The Resolution (colors or color palette) should be usually higher than 256 colors, if possible.